

PANDUIT®

MP500 PRINTER

Quick Reference Card



Printer Tech Support 1-866-871-4571
GA-TECHSUPPORT@PANDUIT.COM
Rev. 1 – 11/8/24



1

MP500 Printer and Accessories

Part No.	Description
MP500	Includes MP500 printer, 1 cassette of S150X150VAM2, USB cable, and power adapter (MP-ACS-2). For use in North America.
MP500/E	Includes MP500-I printer, 1 cassette of S150X150VAM2, USB cable, power adapter (MP-ACS-2) and international power cord(s). For use outside of North America.
MP-ACS-2	120-240 VAC universal power adapter module with power cord for North America.
MP-REWINDER	Accessory rewinder for easily winding bulk label jobs.

MP500 Label Cassettes

- Die-cut self-laminating labels, Turn-Tell™ labels, flag labels, marker plates, nylon cloth, polyester, electrical component labels, network component labels, raised panel labels, die-cut heat shrink and safety labels.
- Continuous heat-shrink tubing and continuous tapes in various sizes, materials and colors.

2

Label Cassette Types

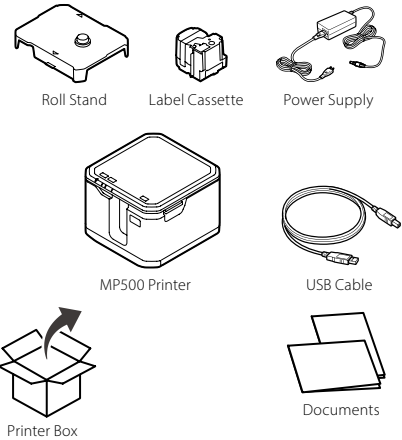
Label Material	Example Part Number	Typical Application
Self-Laminating	S150X150VAM2	Wire/Cable marking
Turn-Tell™	R100X150V1M2	Wire/Cable marking
Heat Shrink	H100X044H1M2	Wire/Cable marking
Marker Plates	M300X050Y6M2	Wire/Cable marking
Flag Labels	F100X150AJM2	Wire/Cable marking
Nylon Cloth	N100X125C1M2	Wire/Cable marking
Nylon Cloth Tape	T100X000C1M-BK	Wire/Cable marking
Adhesive Polyester	C200X100YJM2	General Component Labeling
Polyolefin	C252X030FJM2	Network infrastructure
Polyolefin Tape	T038X000FJM-BK	Terminal blocks
Colored Vinyl Tape Big Roll	T100X000VXMB-BK	Safety/Facility
Safety Label	C190X400A5M2	Safety/Facility
Raised Panel	C100X050APM3	General Component Labeling

Note: Please check Panduit website for the latest firmware and full list of cassette part numbers.

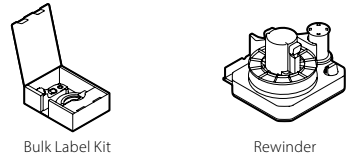
3

Getting Started

• Included Items



• Other Items Sold Separately:



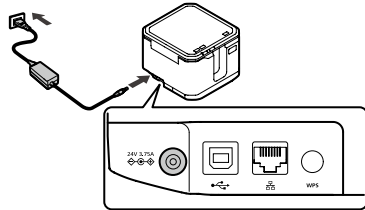
4

Printer Setup

Using the AC Adapter

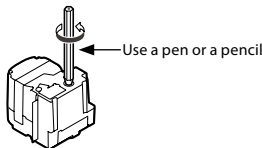
CAUTION
Always use the included AC adapter.

- Connect the included AC adapter to the printer and plug the power plug into a power outlet.



Insert a label cassette into the printer:

- Remove any slack in the tape inside the cassette (if needed).



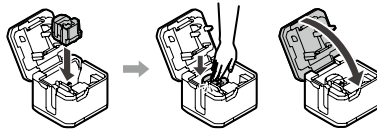
5

Insert a label cassette into the printer (Continued):

- Open the cassette door/printer cover.



- Place the cassette into the printer as shown and close the lid.



Connecting wirelessly to MP500 printer via Infrastructure mode:

- Push the power button on the MP500.



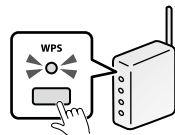
6

Connecting wirelessly to MP500 printer via Infrastructure mode (Continued):

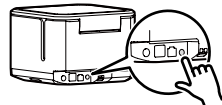
- Push the Wi-Fi button to start the connection process. The Wi-Fi connection light will blink until connection is made, where it will then turn a solid color.



- Press the WPS button on the access point until the lamp starts flashing.



- Press the Connect button on the printer.



7

Connecting wirelessly to MP500 printer via SimpleAP mode:

- Push the power button on the MP500.



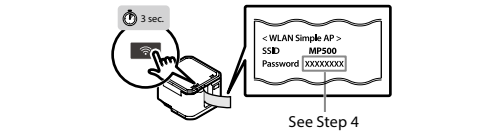
- Push the Wi-Fi button to start the connection process. The Wi-Fi connection light will blink until connection is made, where it will then turn a solid color.



8

Connecting wirelessly to MP500 printer via SimpleAP mode (Continued):

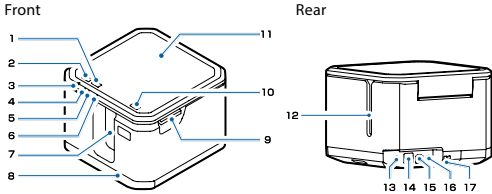
- 3. Hold the Wi-Fi button for 3 seconds to have the printers SSID/Password print for printer pairing purposes.



- 4. Connect to the printer by clicking MP500 under the Wi-Fi connections and entering the password.



Printer Components and Functions:



1	Wi-Fi button	Lets you switch the Wi-Fi mode between the Infrastructure mode, Simple AP mode, and off.
2	Power button	Lets you turn the printer on or off.
3	Power LED	Stays on while the printer is powered.
4	Wi-Fi LED	Stays on while the printer is in the Infrastructure mode.
5	Wi-Fi LED	Stays on while the printer is in the Simple AP mode.
6	! LED	Blinks when an error occurs.
7	Tape ejection slot	Printed labels come out through this slot.
8	Rewinder cover	Open this cover to connect a rewinder unit (available as an option) to the printer.
9	Top cover lever	Push this lever up to open the cover.
10	Feed button	Lets you feed the tape.
11	Top cover	Open this cover to install or remove a tape cartridge.

Printer Components and Functions (Continued):

12	Tape insertion slot	When installing a tape cartridge of Bulk label quick kit in the printer, let the tape pass through this slot.
13	AC adapter connector	Connect the cable of the AC adapter.
14	USB connector	Connect the included USB cable.
15	Wired LAN connector	Connect a LAN cable. Use a shielded twisted-pair, Category 5 or higher, straight-through Ethernet cable wired for 10BASE-T or 100BASE-TX.
16	Connect button	Press this when connecting the printer to a wireless LAN using WPS.
17	Security cable attachment point	For a commercially available security cable lock. Pass the cable through here.

Printing from Mobile App

- Panduit Easy-Mark Plus Mobile printing app is available for iOS and Android devices. Visit online app store or www.panduit.com

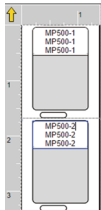
Easy-Mark Plus Mobile App

- Images
- Label Series
- Text
- Text Boxes
- Barcodes
- QR Codes
- Save Labels
- Open Easy Mark Plus Desktop files on mobile application
- Savings files to local device and cloud
- Save files on mobile app and open in desktop version of Easy-Mark Plus
- Many Font Sizes



Print from Easy-Mark Plus Software

- Connect the MP500 printer to a computer with USB cable or connect wirelessly via Wi-Fi.
- Print from Easy-Mark Plus Labeling Software. Easy-Mark Plus is sold separately and includes MP500 driver.
 - Easy-Mark Plus on disc: EMPLUS-CD
 - Easy-Mark Plus on USB flash drive: EMPLUS-2GO
 - Easy-Mark downloadable version: EMPLUS-DL



Additional Support

Visit www.panduit.com

Free Downloads

Path: Support / Download Center / Software
Firmware Printers

- Detailed Operator's Manual
- Replacement Quick Reference Card
- Product Bulletin
- Product Specification and Safety Information
- Latest Printer Firmware

Warranty Registration

Path: Support / Product Registration

Related Products

- MP Label Cassettes
- MP75, MP100, MP200, and MP300 Printers
- Mobile Labeling Apps for Android and iOS
- Easy-Mark Plus Labeling Software

Note: Please refer to the instruction label in cassette compartment for the printer head cleaning.

Global Customer Service

- cs@panduit.com
- U.S. and Canada: 800-777-3300
- Europe, Middle East, and Africa: 44.20.8601.7200
- Latin America: 52.33.3777.6000
- Asia Pacific: 65.6305.7575

PANDUIT TECHNICAL SUPPORT

- GA-TECHSUPPORT@PANDUIT.COM
- U.S. and Canada: 1-866-871-4571
- Europe: 31.546.580.452
- Latin America: 52.33.3777.6000
- Asia Pacific: 65.6379.6700

Part Number: MP500-QRC-EN, Rev. 1
DWG Number: 01303ECC